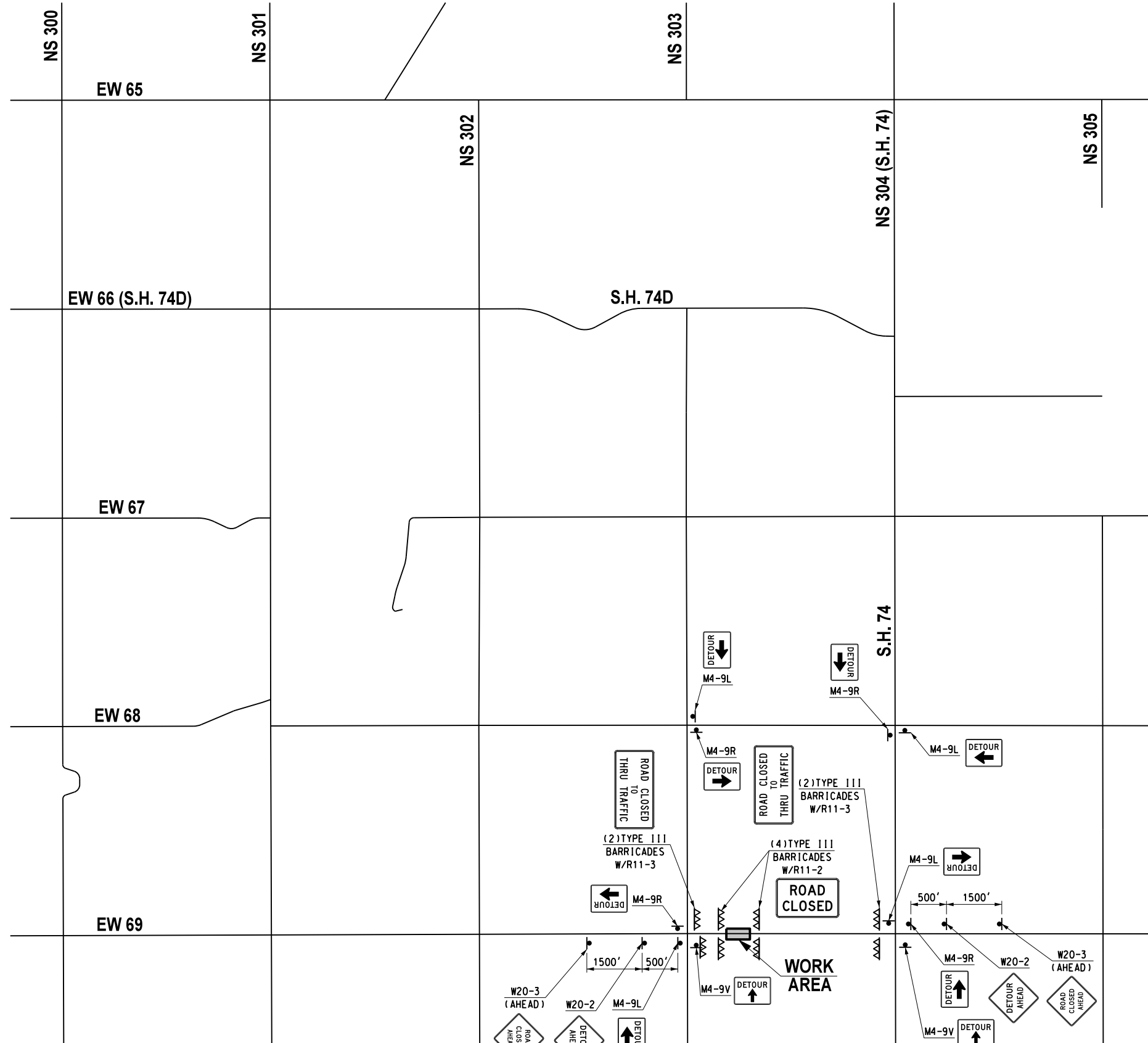


02/20/17 G:\Projects\17-235\SH 74D Bridges east of Lovell\In Logan County, OK\CAD\EW 69 DETOUR.dgn



| | | |
|---------------------------------|-----|----------|
| Design | RWR | 02/20/17 |
| Drawn | CCC | 02/20/17 |
| TEC A CLEAR DIRECTION | | |

PHASE 1
CONSTRUCTION DETOUR
EW 69 COUNTY RD. BRIDGE

State Job No. 28312(04) Sheet No. 45

LOGAN COUNTY S.H. 74D